



Manning Men's Shed Newsletter

An activity of the Manning Senior Citizens Centre January 2022 #01

Editor's Note: The purpose of this Newsletter is to showcase the involvement of MMS in various shed, community, and personal projects, plus the usual members' news. While working on your projects please remember to take photos of what you are doing or have completed, and forward these to the Hon. Editor preferably via email to the Shed email address or in person at the Shed on a memory stick.

Please note that Shed Newsletters can also be viewed at: <https://manning.mensshedsa.org.au/shed-news/>

Monday, Tuesday, Saturday: 8:30am - 1:00pm. **Wednesday, Friday:** 8:30am - 4:00pm. Outside of these hours the Shed will be closed for activity on projects but Shed maintenance may be carried out.

Trial Changes to Shed Opening Times

Members should take note of the new Shed opening times which commenced on Tuesday 4th January 2022, for a trial period.

Monday Morning	8.30am to 1.00pm
Tuesday Morning	8.30am to 1.00pm
Wednesday All Day	8.30am to 4.00pm
Thursday All Day	Shed will be closed
Friday All Day	8.30am to 4.00pm
Saturday Morning	8.30am to 1.00pm

[Starting in February/March - First and Third (and if applicable Fifth) Saturday of the month for Men. Second and Fourth Saturday of the month for Women].

It is stressed that this is a trial and Shed Members will be advised of any changes to the above arrangements.

December 2021 Christmas Sundowner

The Christmas Sundowner was held on Friday 17th December 2021 commencing at 4pm. About 50 Members and Partners attended and enjoyed a spread supplied by Our Ruby Girl.

Shed Committee Chairman, Keith Hayes, welcomed everyone and expressed his thanks for the support that he had received from fellow committee members Kim Horne Brian Graham (Deputy Chairman), Rob Craig (Secretary), Mike Smith (Treasurer), Kim Horne (Shed Manager), Graham Rennie, Bill Barton, Barry Textor, David Vicary and Roland Prince (Retiring Secretary).



Shed Members and Partners enjoying the food whilst listening to Shed Chairman Keith Hayes (out of picture to the left) speak.

Keith and Shed Manager Kim Horne also made presentations to the following Shed Members in recognition of their contribution to the Shed operations:

Michael Hatsiyiannakis and Mel Taylor for their cooking and serving at the Shed BBQ's

Retiring Shed Secretary Roland Prince who is moving to the new Melville Shed closer to his home.

Peter Repton for his work on all things mechanical.

Ambrose Hargan and Martin Lawton who received the Golden Turd Polishers Award for their work on furniture restorations.

Rob Goldfinch for the work he did on the Pizza Oven and the brick paving of the area around it.

Eric Goddard as Honorary Editor for the Shed Newsletters.

Contacts: Shed Telephone Number 9313 2739

Shed Email: ManningMensShed@inet.net.au

Workshop Managers: Kim Horne, Rob Craig, David Vicary **Shed Committee:** Keith Hayes (Chairman), Brian Graham (Deputy Chairman), Rob Craig (Secretary), Mike Smith (Treasurer), Kim Horne, Graham Rennie, Bill Barton, Barry Textor, David Vicary **Assets:** Eric Goddard **Newsletter Editor:** Eric Goddard
Manning Senior Citizens Centre: Glenn Rogers 9450 6273



Keith (left) speaking and Rob (right) receives his award



Michael (left) and Roland (right) receive their awards



Peter (left), and Ambrose with Martin (right) receiving awards



December 2021 Christmas Luncheon

The Manning Senior Citizens Centre held a Christmas Luncheon on Wednesday 15th December 2021 at which 10 Shed Members attended.

Three Shed Members, John Paisley, Bill Barton and Eric Goddard, together with three members from the MSCC, took on the role of Wine Waiters.

Rotary Club of Como Certificate of Appreciation.

Shed Members James Turner and Allan Waugh have been involved in making Buddy Benches for the Rotary Club of Como.



James Turner (centre left), Allan Waugh (centre right), Kevin Saunders (left) and John Dodman (right) at the presentation

Allan and James attended the club end of year dinner in December and received a Certificate of Appreciation from John Dodman, Past Chairman and current Director of Community Services, and Kevin Saunders, who managed the Buddy Bench project.

January 2022 BBQ Meeting

The January 2022 BBQ Meeting will be held on Friday 28th January 2022 commencing at 1.00pm. A StrokeSafe Ambassador from the National Stroke Foundation Perth office will give a talk about strokes – what they are, what their impact can be, what can be done to reduce the risk of having a stroke, how to recognise when someone is having a stroke and what action needs to be taken. The talk will be followed by the BBQ at about 1.30pm.

MSCC General Meeting

Prior to the Australia Day Luncheon at the Manning Senior Citizens Centre, on Friday 28th January 2022, a General Meeting of the Centre Membership will be held commencing at 12.00pm. The agenda has a single item to vote on the awarding of the Life Memberships to 2 Members.

One of those nominated for the award of is Ron Tompkin. Ron was one of the major people involved in getting together a sufficient number of men for a viable Men's Shed to be established. Ron was elected as the inaugural Chairman of the Manning Men's Shed Committee and as the inaugural Shed Coordinator. He was responsible for obtaining support from the Principal of the Como Secondary College for Shed Members to use facilities at the rear of the College until the new Shed was built at Manning. Ron was heavily involved in the planning and construction of the Shed and attended many planning meetings. Ron was also a member of the Manning Senior Citizens Centre Committee for a number of years.

Financial Shed Members are also Financial Members of the MSCC and are encouraged to attend the General Meeting to support Ron's nomination.

New Signing - In Arrangements

The Signing – In items previously just outside the Crib Room door have now been relocated onto a mobile trolley just inside and to the left of the front door to the Shed



The new Signing In mobile trolley

Bunnings Sausage Sizzle

At rather short notice, Bunnings asked us if we could operate a Christmas Sausage Sizzle at their Willetton Shop on Sunday 5th December 2021. Bunnings provided the food and drinks together with the stall and we did the cooking and selling. We also had a display of items made in the Shed for sale.

Kim Horne, John Paisley, Mike Smith, and Rob Craig operated the stall and Bunnings donated a \$200 voucher to the Shed.



Rob Craig (left), Kim Horne, John Paisley serving a customer

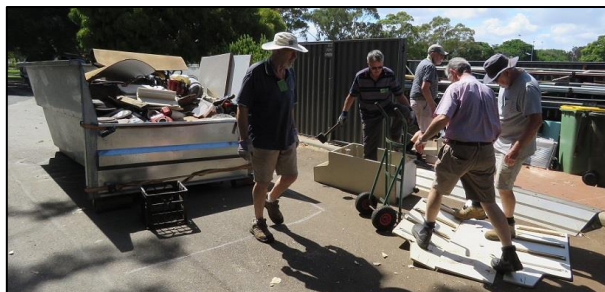


Mike "Father Christmas" Smith

Projects

Busy Bee at the Shed

A Busy Bee was held at the Shed on Saturday 11th December 2021. Over the day 18 Shed Members assisted in carrying out various cleaning, maintenance and rearrangement works.



The Wrecking Gang at work!!

A substantial amount of unwanted and unusable items was removed from the back of the Shed and disposed of into a skip. The work benches in the Wood Workshop were cleaned and sanded and the air extraction pipework was modified.



The Bench Cleaning Gang at work!!

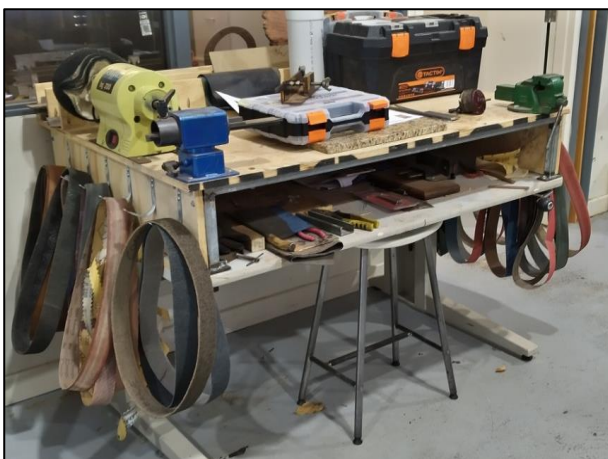


The Pipe Gang (note the FULL skip outside on the left)

Kim Horne, Brian Graham, Eric Goddard, Allan Waugh, Rob Darcy, Vic Singleton, Bernie Dierks, Jim Forster, Brian Stephenson, David Vicary, Barry Textor, David Bryant, James Turner, Mike Smith, Ambrose Hargan, Trevor Lee, Jim Lehman, and Rob Craig helped at various times during the day.

Knife Makers Bench

Knife Makers David Vicary and Mel Taylor have made a bench specifically for use by knife makers. One of the robust adjustable desks has been used to allow the bench height to be adjusted to suit the user.



The newly constructed Knife Makers Bench

Mel welded up a frame which is attached to the top of the desk and Dave made and fitted a 19mm ply bench top and sides. Special knife-makers vices and a small buffing machine have been fitted to the bench top and David has fitted hooks to the sides for hanging the belts for the special grinding machine. The bench is located in the Wood Workshop under the shed Office Window.

Martin and Ambrose Around the Table

Golden Turd* Polishing Award winners Martin Lawton and Ambrose Hargan also being "Knights" of the Round Tables are working on another refurbishing project. They have graduated to a medium sized round drop leaf table in need of some TLC.



Martin Lawton sanding the table top

Martin has been working on sanding the table top whilst Ambrose was regluing the table frame and swinging gate legs



Ambrose Hargan making some fine adjustments to the frame!!!

*Note that the Golden Turd Polishing Award is so named after Martin Lawton described the renovation of some old furniture as "polishing turds".

John Carves It Up

John Paisley continues his foray into woodcarving. His latest project is a carved wooden art piece for display at his home. The piece is carved from a bit of Marri using an angle grinder with a wood carving disc to do the heavy work and Dremel like tool to do the fine finishing. It will be mounted on steel welded stand.



John Paisley doing the fine finish – the heavy carving tools are in the foreground

Another Table Gets a Make-Over



Graham Rennie's Table Top showing the jarrah grain

Tables are second to chairs in the refurbishment department and to keep the tradition going Graham Rennie brought in a large jarrah table to renovate.

After it had been cleaned and sanded, and with help and advice from Kim Horne, Graham applied

a few coats of clear polyurethane finish with fine sanding between coats. This has brought out the very nice grain finish.

Children's Chairs

A couple of children sizes chairs with metal frames have been brought into the Shed to have new seats and backs fitted.

The project was taken on by Allan Waugh and he has made new seats and backs from jarrah slats, cut and glued together to give the rounded shape required, and fitted them to the frames



Allan Waugh fitting the new back and seat to a chair frame

Blanket Box

Allan Waugh has also completed the construction of a nice-looking Blanket Box for a client.



Allan Waugh

The box is made of a combination of contrasting timbers and Allan has given it a clear polyurethane finish.

Dog and Bone

Barry Textor has made a dog stand for his mobile phone (dog and bone = cockney rhyming slang for telephone) using his CNC router



Ken's Clocks

Shed Member Ken Pittman has restored two clocks which were last seen in the Shed in a pretty poor state



Machines and Safety

Further Machine Relocations

At the Busy Bee on Saturday 11th December 2021 various machines were relocated and reconnected to the dust extractor system with revised gate arrangements.

The positions of the Bosch Combination Mitre Saw and the Carbatec Jointer have been swapped. The Thicknesser has been relocated to a more central position next to the Table Saw. The Festool Combination Mitre Saw has been relocated between the back roller door and the Bosch Combination Mitre Saw.

Due to these changes the pipe and gate arrangements on the dust extractor system have been modified.

The Bosch Combination Mitre Saw uses the gate and pipework that was previously used for the Carbatec Jointer. The Thicknesser now has a gate in the vertical pipe connection on the machine and is connected to the appropriate overhead pipe. The Carbatec Jointer uses the gate and pipework that was previously used for the Bosch Combination Mitre Saw.

The flexible pipe connection for the Drum Sander has been moved so that it is outside the overhead storage shelf and not through it and the overhead gate has been replaced by one in the vertical pipe connection to the machine.

The Festool Combination Mitre Saw has its own dust extraction unit and is not connected to the main dust extraction system.



Drum Sander Gate



Festool Saw Dust Extractor

The Table Saw now has a gate where the flexible pipe connects to the bottom of the dust collection chute on the machine.

Note that operation of the Table Saw and the Bosch Combination Mitre Saw at the same time should be avoided – with both operating the air suction on the Mitre Saw is not very effective.



The new gate on the Table Saw

The Bosch Combination Mitre Saw has also been fitted with a back board and shroud around the saw to limit the spread of sawdust and to direct it to the dust extraction hopper below the saw.



Backboard and Shroud on the Bosch Combination Mitre Saw

Note also that the dust extractor pipes have been extended to the section of wall between to internal door to the Metal Workshop and the window of the Shed Office ready for use on the proposed new Metalwork Band Saw. Excess pipe due to the relocation of the Thicknesser has been removed.

Over the Christmas/New Year break the main large diameter pipe on the dust extractor system was shortened. This was done to reduce leakage and improve air flow in the pipes on the remaining system which is now restricted to the eastern third of the Wood Workshop (where all the large machines are now located).



Shortened main pipe and the gate on the drum sander

Bus Garage Storage Changes

The Storage Shelf arrangements in the Bus garage have also recently been revised.

The west wall inside the garage between the windows has been fitted with hooks for storage of the Shed ladders

The shelf unit that was previously against the east wall behind the door to the Wood Workshop has been relocated into the Crib room against the large window overlooking the Wood Workshop.



Display Shelf Unit in the Crib Room

The wooden chairs that were originally in the Crib Room have been relocated with the other similar chairs on the overhead storage shelf in the Wood Workshop. The Crib Room shelf unit will be solely used as a display unit for items made in the shed that are for sale.



The Client Project Storage Shelf and the CNC Router

The shelf unit that was previously against the south wall has been swung round so that it is now at right angles to the wall bounding the access area to the Power Distribution Board. This shelf unit is to be used solely for storing Shed client project items undergoing work or waiting for collection. The area between the east wall and the client project storage shelf unit is to be used solely for the storage of the CNC Router table and its dust extraction unit.

New Wood Workshop Band Saw

The older green small woodwork band saw in the north east corner of the Wood Workshop has been replaced by a new Sherwood band saw about the same size.



Barry Textor setting up the new bandsaw

Shed Members are reminded that they are not permitted to operate this machine until they have received appropriate training, and have been assessed by an authorised Gold Badge member as being competent to use it. Until then Shed Members should seek an authorised Gold Badge Member to supervise operation of the new bandsaw.

Shed Members will be advised when a general training session for the new bandsaw is to be conducted. Note that simply attending a general training session does not permit a Shed Member to operate the bandsaw unsupervised

Compactus

Please note that work will shortly be undertaken to change the arrangements for the storage of tools and accessories in the Compactus. It is intended that a shelf will be allocated to all tools of a specific type i.e., all drills on one shelf, all jigs on one shelf, all saws on one shelf. It will be important for Shed Members to ensure that tools are returned to the shelf they were taken from. Appropriate labelling will be added to assist. Where appropriate boxes will be used to store loose items of a similar type.

Collection Bin for Refundable Items

Two of the large blue plastic barrels from out the back of the Shed have been cut in half to form four open top containers. They are to be used to collect refundable glasses bottles, aluminum cans, and plastic bottles (one for each type) and will remain out the back of the Shed. Please remove lids, empty, and wash any items to be placed in these containers.

Announcement

The Rotary Club of Mill Point, as a sponsor of the Men's shed, invites you to come and enjoy a brand-new comedy-drama looking at a gloriously dysfunctional Australian family. This is modern storytelling at its best!

Spencer tells the story of a tight-knit family led by single-mum and matriarch Marilyn and her three adult children – wayward daughter Jules, mouthy coulda-been Ben and AFL player and golden-boy Scott. Written by award-winning playwright Katy Warner (2016 Green Room Nomination for A Prudent Man), Spencer asks us to consider how much our family defines who we are, and whether we ever really grow up...

The play will be performed at the historic Old Mill Theatre in South Perth on the 21st January 2022 at 7:30pm. Delicious catering for the evening will be done by the famous Rotary sewing sisters!

The link to buy tickets is:

<https://e.mybookingmanager.com/spencer>

Graham hopes to see you there

Manning Men's Shed Coming Events

Date	Day	Time	Event
26 Jan 2022	Wednesday	All Day	Shed closed for Australia Day Holiday
28 Jan 2022	Friday	1.00pm	Talk by Stroke Foundation Speaker + Shed BBQ Meeting

Manning Senior Citizens Centre Coming Events

Date	Day	Time	Event
26 Jan 2022	Wednesday	All Day	Senior Citizens Centre close for Australia Day Holiday
28 Jan 2022	Friday	12.00pm	MSSC General Meeting to voting for the awarding of Life Memberships. MMS Members are eligible to vote.
28 Jan 2022	Friday	12.30pm approx.	Australia Day Luncheon